



CAROLE ROBERTSON CENTER
for Learning

THE ART & SCIENCE OF

SPARKING POTENTIAL



**ANNUAL
REPORT**

Fiscal Year
2024



Table of Contents

The Science Behind the “Spark”	2
Letter from Our CEO & Board Chair	3
Our Service Footprint	4
FY24 Highlights	5
The Art and Science of Building Brains Through Play	6
Lighting the Path: How We Help Young Leaders Find Their Spark	8
Measuring What Matters for Continuous Improvement	10
Connecting the Dots: Child, Family, Classroom, and Community	12
Shaping Minds, Shaping Careers	14
Imagining—and Championing—a Brighter Future for Children and Families	16
Building the Center’s Future Through our First Large-Scale Campaign	18
Financials	19
Appendix A: Early Childhood Education Developmental Outcomes	21
Appendix B: Health Care Access	22
Board of Directors	23

The Science Behind the “Spark”

At the Carole Robertson Center for Learning, we’re passionate about helping young learners find their spark—that “aha” moment that comes with mastering a skill, discovering a new passion, or finding one’s sense of belonging.

In this report, we’ll share a rich collage of stories about how our mission to educate, enrich, and empower children and families comes alive, all while unpacking the art and science behind what makes young learners’ minds light up.

Much of the artwork in this Annual Report was created by children and youth enrolled in the Carole Robertson Center’s programs.

Letter from Our CEO & Board Chair

DEAR FRIENDS, PARTNERS, AND FELLOW CHANGEMAKERS,

Nurturing young minds is both an art and a science: It is a creative endeavor that at its most impactful follows the lead of children’s endless curiosity and interest but is rooted in brain science, educational research, and evidence-based practice. For this year’s annual report, we focus with joy on **The Art & Science of Sparking Potential**.

Over the past few years, the Center has evolved dramatically in our scope and footprint, both geographically and in the number of individuals positively impacted. We now reach approximately 15,000 children and youth, parents and family members, educators, and partners in Chicago and beyond each year. This growth gives us new and exciting opportunities to share our learnings and innovations with peers across the city, state, and nation. As a community-based organization with a social justice mission, we remain true to our roots in the community, continuing to do for, by, and with our families as children’s first teachers.

We are dedicated, as always, to high-quality direct service as a **provider of early education and youth development programs**, knowing that our **passionate and well-prepared workforce** brings to life our mission to **educate, enrich, and empower children and families**.

We have deepened our commitment to **continuous quality improvement**, building a robust internal data and evaluation infrastructure that supports innovation across our programs.

And we have leaned into **community-based advocacy** to give those we serve a voice in policy development and systems change.

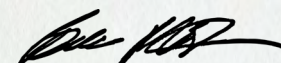
In the pages that follow, you will read about how our programs **embody both the art AND the science** of building brains and sparking potential among the children, youth, families, and communities we serve. Just as art and science work together to spur innovation, the Center’s direct service programs, data-driven best practices, and community-based advocacy complement each other to advance our mission.

To support this work at its highest level into the future, we have launched the **Invest Today, Empower Tomorrow Campaign**, a \$20 million, 5-year initiative. The campaign will create vibrant learning environments at our three flagship sites, fund program innovations, and ensure organizational resilience so that we can continue to provide essential services to our children and families, no matter what challenges the future may bring.

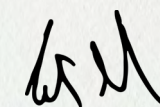
We thank all of our partners who share our vision for the Center’s future and, with the deepest resolve, we advance our commitment to our children and youth, families, staff, and communities.

Thank you for your support and the trust you place in us.

In gratitude,



Bela Moté
PRESIDENT & CEO



Carter Culver
BOARD CHAIR

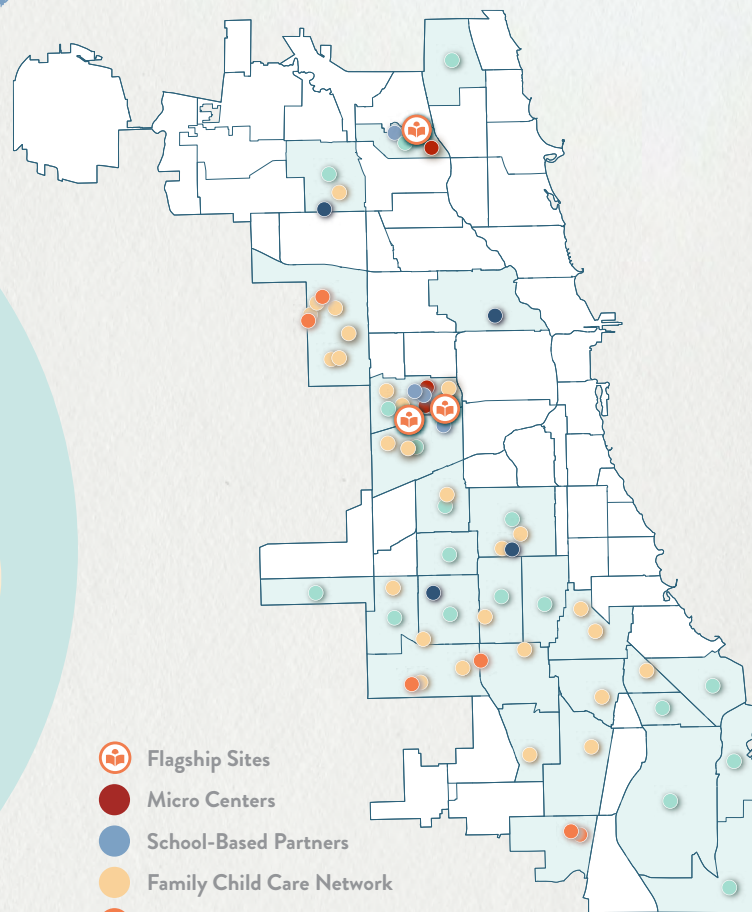


Our Service Footprint

The Center reaches
15,000

children and adults annually through our direct service programs, community partnerships, workforce development efforts, and support services for independent child care providers.

The Carole Robertson Center directly serves over
2,500
children from prenatal to 17 in our early education and youth development programs each year.



- Flagship Sites
- Micro Centers
- School-Based Partners
- Family Child Care Network
- Center-Based Partners
- Home Visiting Communities
- Subrecipient Organizations

Ages of Children Served, 2023-24

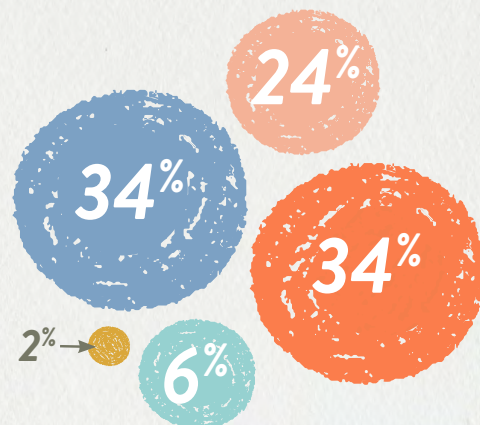
39%
Birth-3 Years
(978)

31%
3-5 years
(786)

30%
5-17 years
(752)

For early childhood developmental outcome data and health care access, see pp. 21-22.

Racial and Ethnic Identity of Children Served



- White and Latino (755)
- Black or African-American and Not Latino (752)
- Asian (144)
- Biracial/Multiracial (54)
- Other (539)

Some data for youth racial and ethnic identities are not available.

FY24 Highlights



OCTOBER 2023

The Center hosts a press conference during which Governor Pritzker proposes a unified agency for early childhood care and education in Illinois—now known as the **Illinois Department of Early Childhood**. He appoints President and CEO Bela Moté as Chair of the new state agency's Transition Advisory Committee (TAC), which oversees and guides stakeholder engagement as the state transitions to the new agency.

NOVEMBER 2023

The Center hosts **Pathways to Equity**, a thought leadership event for policymakers, practitioners, and scholars, based on findings from Closing the Opportunity Gap for Young Children, a May 2023 study by the National Academies of Sciences, Engineering, and Medicine (NASEM), co-authored by President and CEO Bela Moté.

JULY 2023

Albany Park Flagship site earns full reaccreditation from the National Association for the Education of Young Children (NAEYC), reaffirming the site's commitment to high-quality early education.

SEPTEMBER 2023

The Center commemorates the **60th anniversary of the 16th Street Baptist Church Bombing** with an intimate gathering of friends and supporters, youth essay contest, and educational programming honoring our namesake, Carole Robertson, and the three other young girls killed in the bombing.



APRIL 2024

Staff advocates travel to Springfield to champion **investments in early education and youth development**, speaking with Deputy Governor Martin Torres, State Senator Lakesia Collins, First Assistant Deputy Governor for Education Teresa Ramos, and State Senator Ram Villivalam.

MARCH 2024

The Center receives a **\$750,000 grant from We Rise Together**—a funders collaborative focusing on community ownership and supporting Black and Latinx communities—to support capital improvements at our Little Village flagship site.

APRIL-JULY 2024

North Lawndale and Little Village Flagship Sites Earn **ExceleRate Illinois Gold Circle of Quality Designation**.

Our North Lawndale and Little Village flagship sites earned the ExceleRate Illinois Gold Circle of Quality designation, reflecting their ongoing commitment to providing high-quality care for children and families.



MAY 2024

Our annual **E3 Gala** brought friends and supporters together in celebration of our mission to educate, enrich, and empower children and families. During the evening program, Pulitzer Prize-winning author Jonathan Eig, keynote speaker and author of King: A Life, joined WTTW's Chicago Tonight anchor Brandis Friedman for a conversation on Dr. King's fight against segregation.



The Art and Science of Building Brains Through Play



PLAY IS THE BASIS OF LEARNING. That's why the Carole Robertson Center's **Early Childhood Education (ECE) program** uses the play-based Creative Curriculum to spark curiosity and guide our youngest learners (ages 0 to 5) through key developmental milestones. Through investigation and discovery, children's brains develop, forming new neural connections and pathways. Play is the "work" of children, nurturing vital skills like emotional self-regulation, critical thinking, and physical development.

As our children learn and grow, we partner closely with our families from day one to keep them informed about their children's development and empower them to amplify the learnings at home. Through our family support services, we provide assistance and referral to support the family in its journey. Through **social emotional learning, mental health support, early intervention, and trauma-informed care**, we provide customized learning environments that bring out each child's potential.

Whether in our **Infant/Toddler program** for little ones 0 to 3 years old, or in our **pre-Kindergarten program** for those 3 to 5 years old, the Center offers many accessible options for families to find the right fit: center-based care at our flagship sites, home visiting, micro-centers in local charter schools, or independent family child care or small center providers.

BRAIN FACTS

In a child's earliest years, the brain creates more than 1 million neural connections every second. (Center on the Developing Child, Harvard University)



Portrait of a Pre-Kindergarten Graduate

Preparing children to succeed in school and life is one of the Center's key objectives. This chart outlines our aspirations for children transitioning to kindergarten.



BRAIN FACTS

Multilingual children show increased mental flexibility, stronger focus, and greater problem-solving ability than children exposed to only one language. (NAEYC)

"We want the children to get their hands dirty and explore the world around them. We want them to climb up the slide and learn what happens when they do. Child-directed play inspires curiosity and helps young learners develop problem-solving skills."

- RITA BARTH, INFANT/TODDLER PROGRAM ADVISOR

Lighting the Path: How We Help Young Leaders Find Their Spark

YOUTH DEVELOPMENT IS PART OF THE CAROLE ROBERTSON CENTER'S DNA—our founding story and earliest programs revolved around providing high-quality afterschool options for Chicago's youth. Nearly 50 years later, the Center's commitment to tomorrow's leaders is stronger than ever.

Through **experiential learning that embraces self-expression**, our youth development programs play a critical role in providing school-aged children (5-17 years of age) with opportunities to grow academically, socially, and emotionally.

During the school year, the Center offers two youth development program models: a **holistic after-school program** and a **club model focused on specific interests**. During the summer, our day camps offer youth opportunities to enjoy the outdoors, engage with their communities through service and advocacy projects, and make memories that will last a lifetime. Across the full breadth of our youth development programming, trusted mentors create a safe and supportive environment for young people to find their spark.

"FUNDEMICS," POWERED BY STEAM

To reinforce academic skills outside the classroom, our youth development programs incorporate **STEAM (science, technology, engineering, art, and math) learning** into the mix of enrichment activities we offer. From art and dance to science and sports, we not only keep students engaged, but we also help them develop the core competencies they need to succeed in school and in life. These activities are intentionally designed to spark curiosity, creativity, and critical thinking, while also promoting self-confidence and problem-solving.

"The Carole Robertson Center has always been a safe place for me. I've been attending the North Lawndale site since I was 6, and the teachers and friends I've made inspire me to push outside of my comfort zone... These experiences at the Center have inspired my aspiration to attend university as the first in my family and to achieve my dream of becoming a sonographer."

- GISELL GARNICA, YOUTH DEVELOPMENT ALUMNA & CAROLE ROBERTSON MEMORIAL SCHOLARSHIP RECIPIENT, 2024



SUPPORTING THE WHOLE CHILD THROUGH SOCIAL-EMOTIONAL LEARNING

Inspiring youth to reach their full potential goes beyond academics. **Social-emotional learning (SEL)** is just as important for helping young people navigate challenges and develop resilience. Our programs prioritize SEL at every stage of development, ensuring students have the emotional and mental tools they need to thrive.

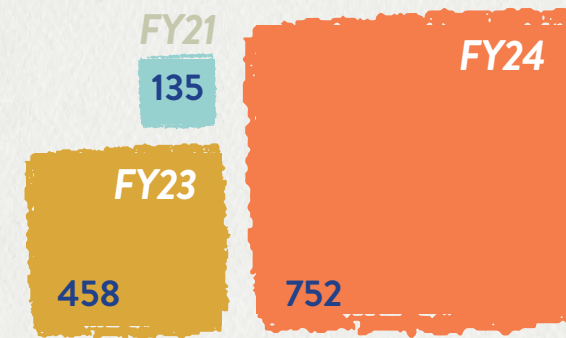
Staffed by dedicated **Youth Development Instructors and Youth Development Assistants**, our programs are built to support the whole child—and the whole family. By educating youth in restorative justice, offering mental health resources, and providing wraparound support to families, we build positive learning environments that promote mental and emotional well-being.

CREATING PATHWAYS FOR SCHOOL-AGED YOUTH

In addition, our programs equip youth with both **technical and interpersonal skills**, preparing them for a range of college and career opportunities while helping them to develop healthy coping strategies to explore their future paths with confidence.



Growth in Number of Youth Served in the Center's Youth Development Program



Family Survey Highlights

87% of families reported overall satisfaction with the Carole Robertson Center for Learning afterschool program.

90% of families reported that because of their time at the Center's after-school program, their child is growing in their social skills (for example, making friends and teamwork).

BRAIN FACTS

According to research from the University of California, Berkeley, participating in artistic activities like drawing and painting can significantly stimulate the prefrontal cortex of the brain, a region associated with complex cognitive functions like decision-making and higher-order thinking.

Measuring What Matters for Continuous Improvement



AT THE CAROLE ROBERTSON CENTER, WE EMBRACE DATA.

Data collection and analysis are critical to our efforts to reliably evaluate our programs, measure children’s developmental progress, and enhance our staff’s professional development on a cyclical basis in order to continually refine and improve our service quality. We use data to explore avenues that could lead to new or expanded programs and even effect systems change toward a more equitable society.

This emphasis on rigorous measurement and innovation permeates the Center—so much so that we developed a novel, outcomes-driven in-house team dedicated to Learning, Evaluation, Scaling and Dissemination (LESD). This robust LESD infrastructure far exceeds what is typical in the sector and allows us to take our data to a new level. With transparency in mind, we make data accessible to our staff through a shared online platform.

Data are meaningfully incorporated into professional practice through “Data Dialogues” and “Planning with Data” sessions. After the collection of key datasets, staff are brought together to reflect on their data and develop goals and action plans to strengthen their practices in ways that will be most impactful for the children and youth in our programs.

These sessions empower staff to understand and utilize their own data, as the Center believes strongly in the importance of data transparency and ownership. For example, in the Youth Development (YD) space, the Program Quality Assessment (PQA) tool is used twice a year to measure the quality of teaching practices. By choosing to focus on a particular goal, teachers and program leadership increased its rating in one year by almost a full point on a 7-point scale.



“It’s easy for an organization to treat data as an afterthought or another box to check, but it’s clear that at the Carole Robertson Center our leadership treats it as an integral part of programming. Meaningful continuous quality improvement and a robust professional development system are only possible when an organization’s leadership is willing to invest money and resources to make it happen. This is incredibly rare in non-profits and it’s a testament to the fact that our leadership understands the importance of data and evaluation for providing high quality programming.”

– JASMINE ROGASNER, SENIOR DATA ANALYST

The Data We Collect

The following is just a sampling of the data collected by the Center’s LESD (data) team.

SUBJECT GROUP	WHAT WE MEASURE
Children 0-5	Indicators of children’s development (social-emotional learning, physical, language, cognitive, literacy, math) and kindergarten readiness
Youth	Indicators of social-emotional learning, reading progress, math skills, engagement, quality of student-teacher relationships
Staff	Indicators of classroom quality, quality of teacher-child interactions, social and emotional well-being, staff satisfaction and areas for organizational improvement
Families	Indicators of family and provider/teacher relationship quality, family perceptions of child’s growth, family relationships with staff



BRAIN FACTS

A 3-year-old’s brain is twice as active as an adult brain. (Zero to Three)



Connecting the Dots: Child, Family, Classroom, and Community



A WELL-KNOWN CONCEPT IN EDUCATION is that children and youth have three teachers: their parents or guardians, their classroom teachers, and their physical environment.

All three of these “teachers” play a vital role in creating **strong support systems at every stage of development, from infancy to adolescence**. And they’re interdependent: Families rely on professional educators to guide their children through **developmentally appropriate curriculum**. Educators count on family caretakers to reinforce **social-emotional and academic skills** at home. Families and educators need supportive environments to foster a **sense of belonging** in a child’s formative years.

At Carole Robertson Center, **we connect the dots between child, family, classroom, and community** through comprehensive wraparound supports.

BRAIN FACTS

When adults interact with children in a caring, responsive way, they help build and reinforce neural connections in a child’s brain that support the development of important cognitive, social, and language skills. (Center for Developing Children—Harvard University)


This begins with our **Eligibility, Recruitment, Selection, Enrollment, and Attendance (ERSEA) team**. Through community outreach and equitable intake practices, our ERSEA staff identify families who would benefit most from our early education and youth development programs.

From there, every enrolled family gets paired with a **Family Support Specialist**—a caring, knowledgeable professional who can connect parents and guardians with job programs, rent and food assistance, healthcare providers, and other social services.



We also understand that positive learning environments aren’t one-size-fits-all. That’s why, in addition to our site-based programs and school and community partnerships, we offer **Home Visiting services** to families who need more personalized support. Our Home Visitors provide early education and prenatal care to families with the same rigorous standards of quality that define all Center programming. In many cases, our Home Visitors offer affirming, culturally responsive education that wouldn’t be as readily available in other settings.

Throughout the year, the Center distributes diapers, formula, backpacks, school supplies, and holiday gifts to families, **alleviating economic stressors so that families can thrive**. By meeting families where they are, we empower them to be the best co-educators they can be.

Just like neurons communicate within networks to send messages to and from the brain, the many components of a child’s village work in tandem to construct a **strong foundation of safe, healthy relationships that encourage curiosity and exploration**. 

By weaving family, community, and classroom supports together, the Center builds networks of support that uplift the entire family unit.

81% of families reported more positive interactions with their child since the start of the program year.

Family Survey Highlights

87% of families feel their early education childcare provider or teacher uses their feedback to adjust the education and care provided to their child.



“If I did not have the Carole Robertson Center for Learning in my path, honestly, I don’t know what I would do... Knowing that [my son] was safe and I was still able to go and get the care that I needed allowed me to be at ease.”

– CONTESSA HOUSTON, CHAIR, FAMILY & PARENT POLICY COUNCIL, CAROLE ROBERTSON CENTER BOARD OF DIRECTORS



WATCH CONTESSA'S STORY

Shaping Minds, Shaping Careers

BEHIND EVERY YOUNG LEARNER'S BRIGHT FUTURE is a village of trusted grownups who light the way. At the Carole Robertson Center, sparking potential starts with supporting our education workforce, empowering them to see—and create—new possibilities for themselves.

What fuels this workforce dedicated to the joyful, rigorous work of building brains? Just like our approach with children, it's a blend of **creativity, connection, and intentional development practices rooted in data.**

Our **TransformED** (formerly known as Grow Your Own) apprenticeship model exemplifies the Center's commitment to bold innovations that strengthen our workforce. A response to the early education workforce shortage, TransformED creates life-changing pathways for community members to pursue careers in early childhood education. By recruiting directly from the neighborhoods we serve, TransformED ensures that our staff demographics reflect the lived experiences of our children and families; this results in more culturally responsive education and care. TransformED participants have gone on to become teachers, home visiting specialists, and training specialists, with several pursuing associate's, bachelor's, and master's degrees in education. Since 2023, the Center has participated in Illinois' first-ever statewide apprenticeship pilot for early education.



Our TransformED apprenticeship has created

80

jobs in the early childhood education sector.



100%

of TransformED participants who completed our Child Development Associate (CDA) cohort passed the exam to obtain their CDA, a professional credential for early childhood educators. The national average is 15%.

TransformED
The Carole Robertson Center for Learning's Apprenticeship Program

On average, TransformED participants who have continued their employment with the Carole Robertson Center since the initiative's 2021 launch have experienced an increase in annual wages of approximately

18%



Staff Survey Highlights

93% of respondents reported feeling like they're making a positive difference in the lives of children and youth.

88% of respondents reported feeling respected by their colleagues.

81% of respondents said the organization intentionally includes employees of color in all organizational efforts.



No matter their role in our mission to educate, enrich, and empower children and families, all Center staff contribute to—and benefit from—**a culture of mentorship and continuous growth.** Through staffwide Town Hall gatherings and our annual SEED (Staff Education, Enrichment, and Development) Conference, Center employees come together to hone their craft and draw inspiration from one another.

Most of our **professional development programming** is produced in-house, so we're able to design these experiences based on feedback collected from staff surveys. These data help us listen better and tailor staff engagement opportunities to our workforce's diverse needs and goals.

Chief among these needs and goals is **staff well-being.** We invest in our people by advocating for competitive, thriving wages, including increases to state and local investments that fund pay equity, retirement, health benefits, and continuing education. Our Mental Health team, in addition to supporting children's and youth's social-emotional learning, leads a cross-departmental Wellness Committee to help build community, address burnout, and promote healthier lifestyles.

By listening to the data behind what inspires people, we not only **shape meaningful career journeys for the Center's 320+ staff**—we also fortify the early education and youth development workforce as a whole.

Chief Programs & Impact Officer Sonja Crum Knight speaks about the Center's innovative approach to **workforce development** in a video produced by the National Early Care and Education Workforce Center.



HEAR SONJA TALK ABOUT WORKFORCE DEVELOPMENT

Imagining—and Championing—a Brighter Future for Children and Families

THE CAROLE ROBERTSON CENTER'S STORY IS ROOTED IN CHILDREN AND ADULTS ENVISIONING what a more just, equitable society could look like for Chicago's young people—and acting on it.

In 1976, the impending closure of a beloved after-school program served as the spark that mobilized parents and neighbors on Chicago's West Side to form an organization dedicated to uplifting children, youth, and families. A student involved in this effort had the idea to name this organization after Carole Robertson, one of the young victims of the racially motivated 16th Street Baptist Church bombing, as an act of remembrance.

Today, this longstanding commitment to social justice informs every aspect of how we show up for our communities—including our approach to Community-Based Advocacy.

At the local, state, and national levels, the Center works diligently to ensure that our youth, families, and staff have a seat at the table where policies affecting their everyday lives are formed. Our Advocacy Committee educates staff on relevant policy developments, giving them a platform to share their voices and perspectives. We incorporate civic engagement and education into our annual Family Orientations across all program sites. In FY24, staff, parents, and youth even had the chance to advocate in Springfield and Washington, D.C. for early childhood and youth development investments.

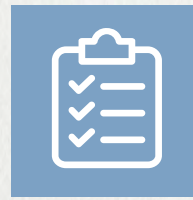


“All children deserve fierce advocates—those who believe in them, listen to them, encourage them, love them. Advocates who assure their futures are bright.”

– PRESIDENT & CEO BELA MOTÉ, ACCEPTING ERIKSON INSTITUTE'S 2023 ADVOCACY AWARD



5 staff participated in Early Childhood Advocacy Day 2024 in Springfield.



450+ staff/parents have participated in our Community-Based Advocacy efforts, including informational, educational, and town hall sessions.



Illinois' Department of Early Childhood (IDEC) will consolidate services previously administered by three separate agencies:



These efforts, along with those of fellow community-based organizations in our sector, have led to substantial policy wins. In June 2024, Illinois made history by creating the Department of Early Childhood, a state agency dedicated to making high-quality education and care more streamlined and accessible for Illinois' families. The Center sits at the forefront of this change, with President & CEO Bela Moté serving as chair of the new department's Transition Advisory Committee. In this capacity, Bela collaborates with fellow providers, advocates, experts, and families to gather stakeholder input, giving Illinoisans a voice in the agency's design and rollout.

As our advocacy footprint grows, so does our collective capacity for systems change. Whether mobilizing parents to share their stories, empowering staff to reflect on how policy affects them, or amplifying the voices of youth, our advocacy efforts center the lived experiences of those we serve.

Community-Based Advocacy is both an art and a science: It requires the creativity to imagine a brighter future and the persistence to navigate complex systems. At the Carole Robertson Center, we set out not only to imagine a world in which every child, family, and community can access the support systems they need to reach their fullest potential—we're building that world, too.

BRAIN FACTS

For every \$1 invested in high-quality early childhood education, society sees a \$7 to \$12 return (Heckman et al. 2010).



Building the Center's Future Through Our First Large-Scale Campaign

THE CAROLE ROBERTSON CENTER OPERATES ON THE BELIEF THAT ALL CHILDREN, regardless of their zip code, deserve safe, nurturing places to learn, play, and grow.

To ensure our ability to deliver on this principle, the Center launched its first-ever large-scale comprehensive campaign during FY24, informed by the latest research on learning environments and extensive input from our stakeholders.

BRAIN FACTS



A study by Perkins Eastman, the architectural firm behind the capital improvements for the Carole Robertson Center, found that high-quality learning environments boost educational outcomes and strengthen communities.

Divided into three parts, the \$20 million **Invest Today, Empower Tomorrow Campaign** will transform the Center's flagship sites into inspiring spaces of learning; build capacity for continuous quality improvement and systems change; and strengthen the Center's resilience in the face of unforeseen challenges.

By investing in innovative, high-quality programs and learning environments for our children today, we will create a brighter future for Chicago tomorrow.

To learn more, please visit our campaign website:
<https://www.carolerobertsoncenter.org/invest-today/>



Renderings show the vision for the Little Village flagship site, the first of our 3 flagship sites to undergo capital improvements.



FISCAL YEAR ENDING JUNE 30, 2024 (Audited Financial Statement Extracts)

Financials

ASSETS

CURRENT ASSETS	
Cash and cash equivalents	\$3,923,898
Investments	\$6,309,509
Accounts receivable	\$6,580,870
Prepaid expenses	\$284,595
Total current assets	\$17,098,872
PROPERTY AND EQUIPMENT	
Land	\$1,800,000
Facility	\$7,671,156
Other property and equipment	\$665,213
Construction in progress	\$618,935
Less: Accumulated depreciation	(\$5,829,504)
Net property and equipment	\$4,925,800
Other Assets	\$711,790
Total Assets	\$22,736,462

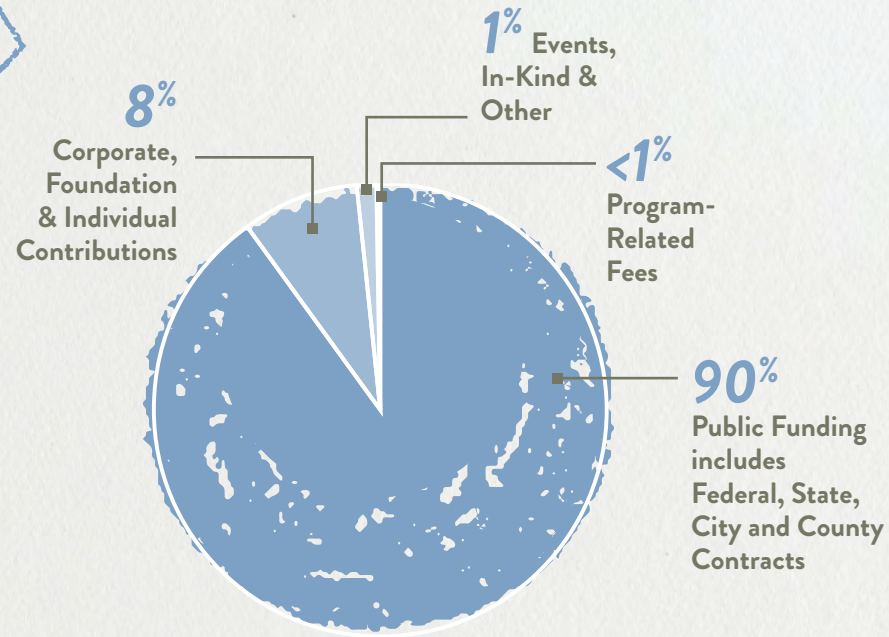
LIABILITIES AND NET ASSETS

CURRENT LIABILITIES	
Accounts payable	\$1,518,137
Accrued expenses	\$1,347,399
Current portion of capital leases	\$143,701
Total current liabilities	\$3,009,237
NONCURRENT LIABILITIES	
Noncurrent portion of capital leases	\$462,348
Total noncurrent liabilities	\$462,348
Total liabilities	\$3,471,585
NET ASSETS	
Without donor restrictions	\$15,856,165
With donor restrictions	\$3,408,712
Total net assets	19,264,877
Total Liabilities and Net Assets	\$22,736,462

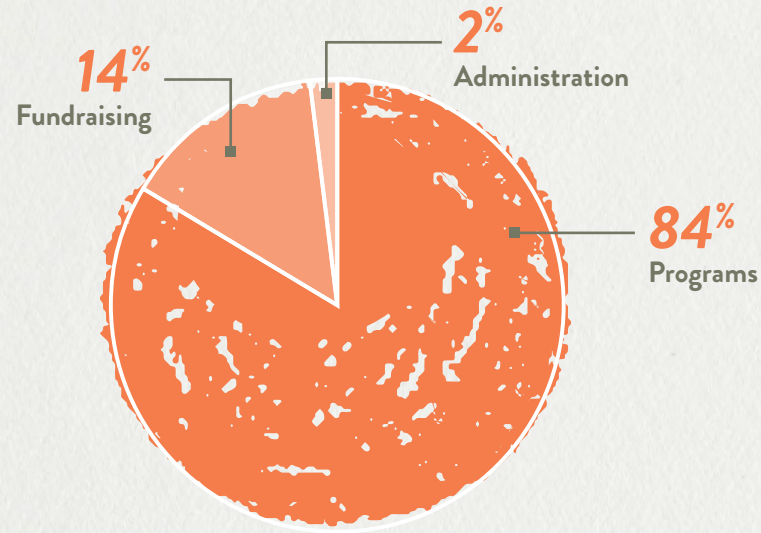


View full audited financials at
<https://www.carolerobertsoncenter.org/financial-statements/>

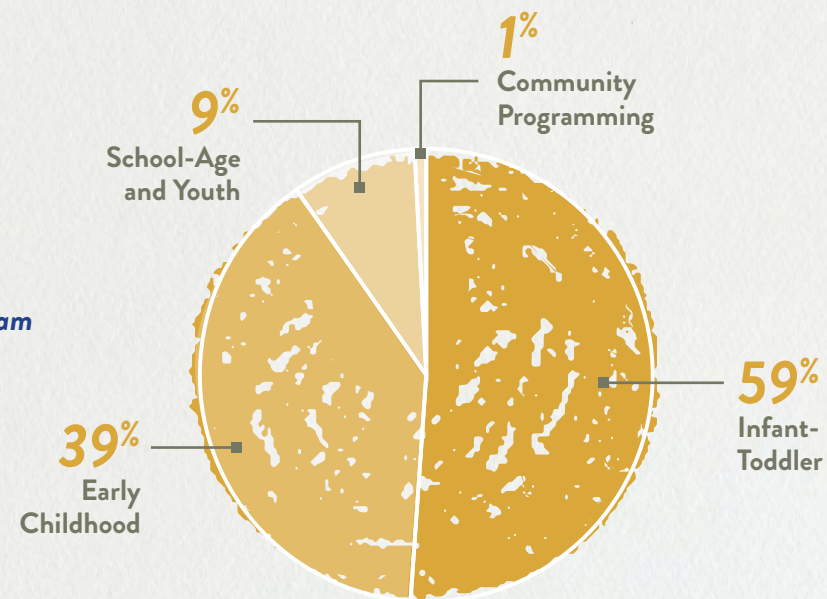
Revenue by Category



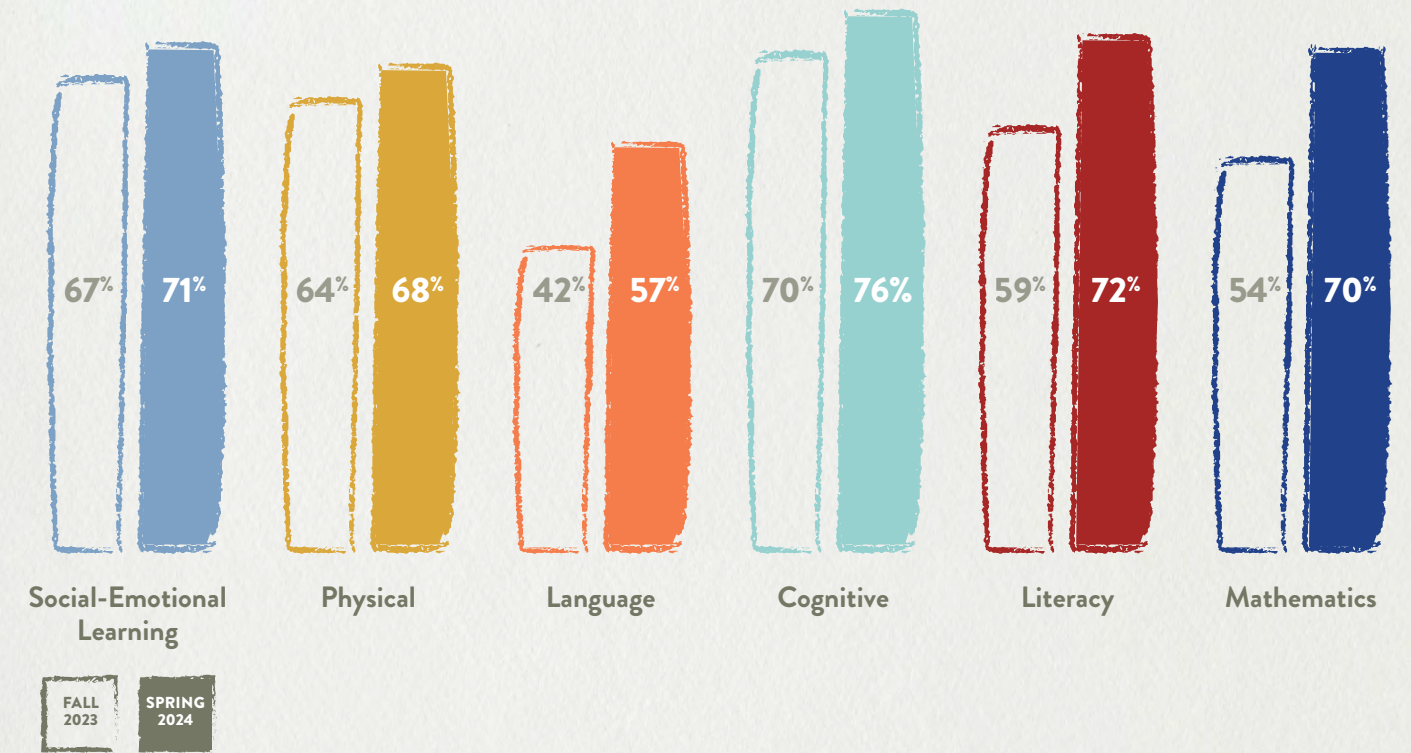
Expenses by Category



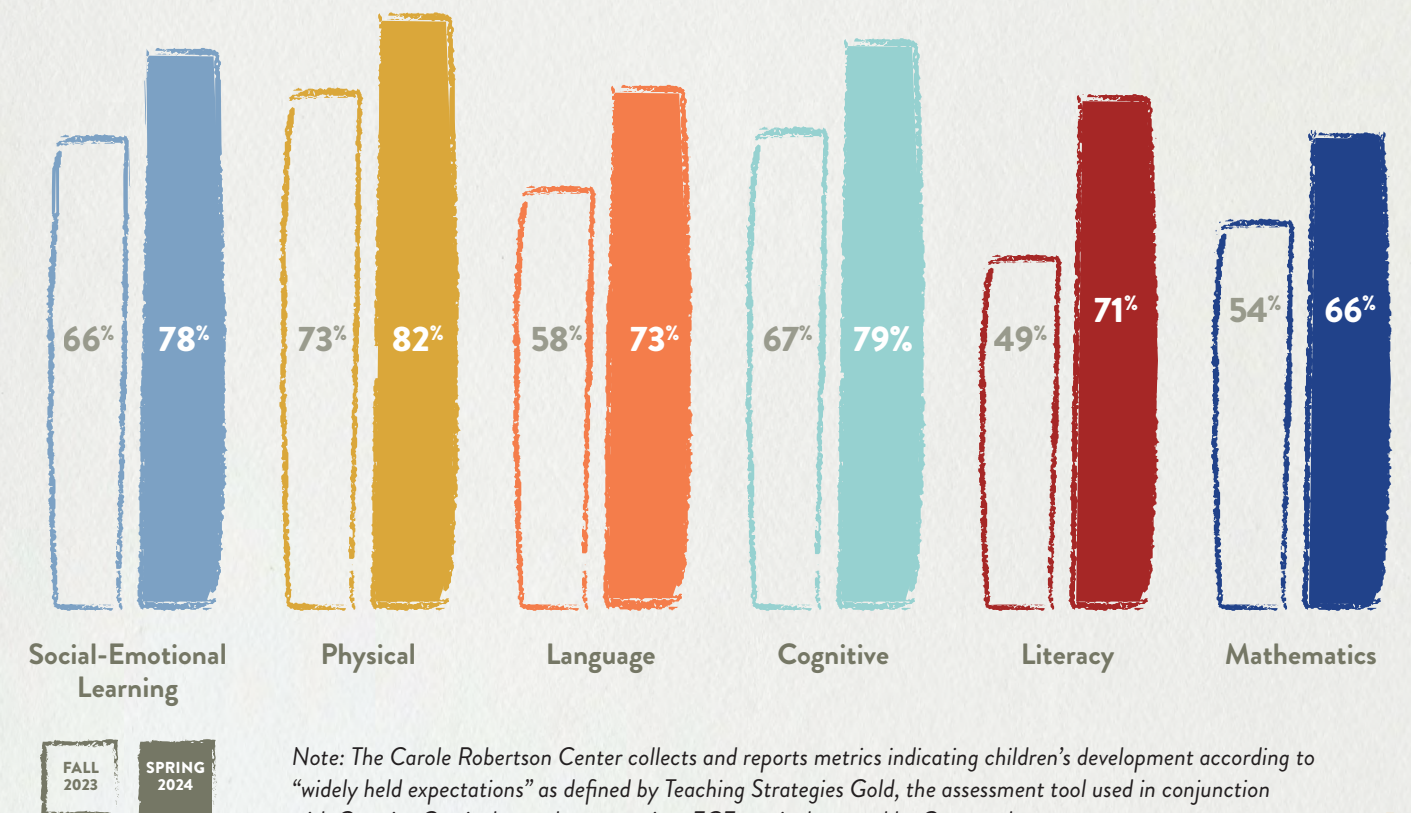
Breakdown of Program Expenses by Type



Percent of children 0-3 meeting or exceeding developmental standards by content area

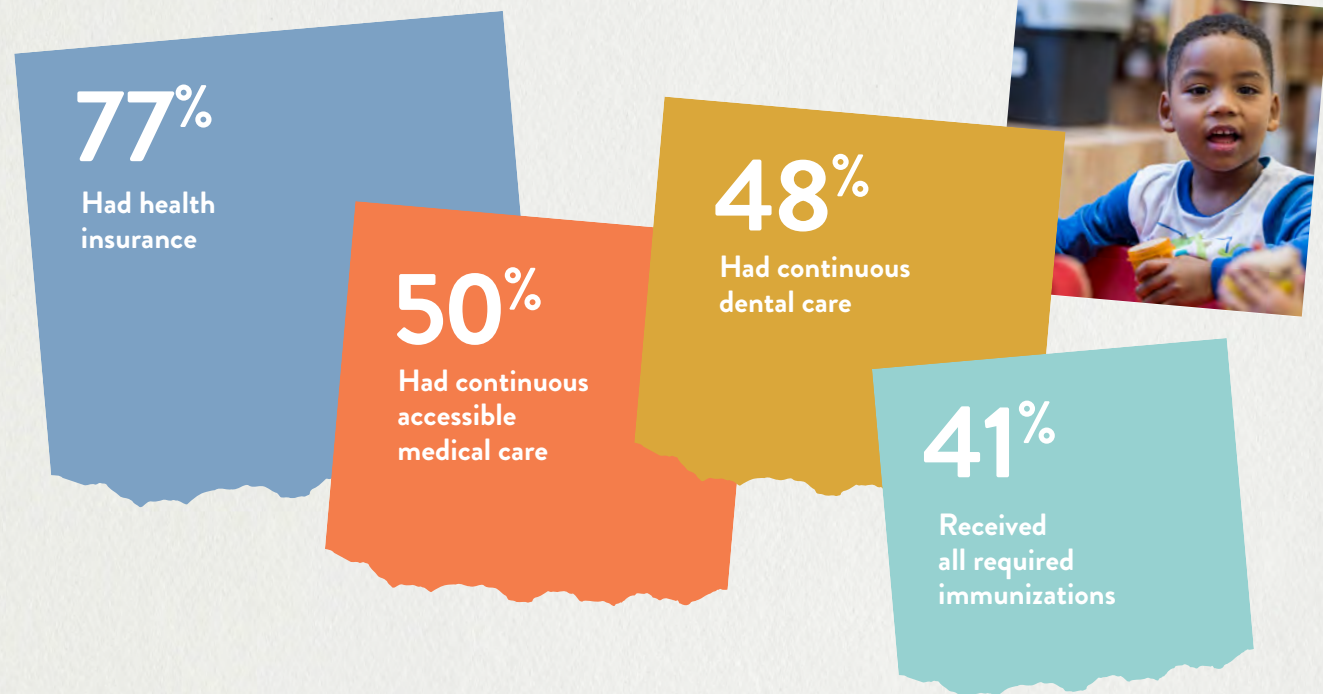


Percent of children 3-5 meeting or exceeding developmental standards by content area

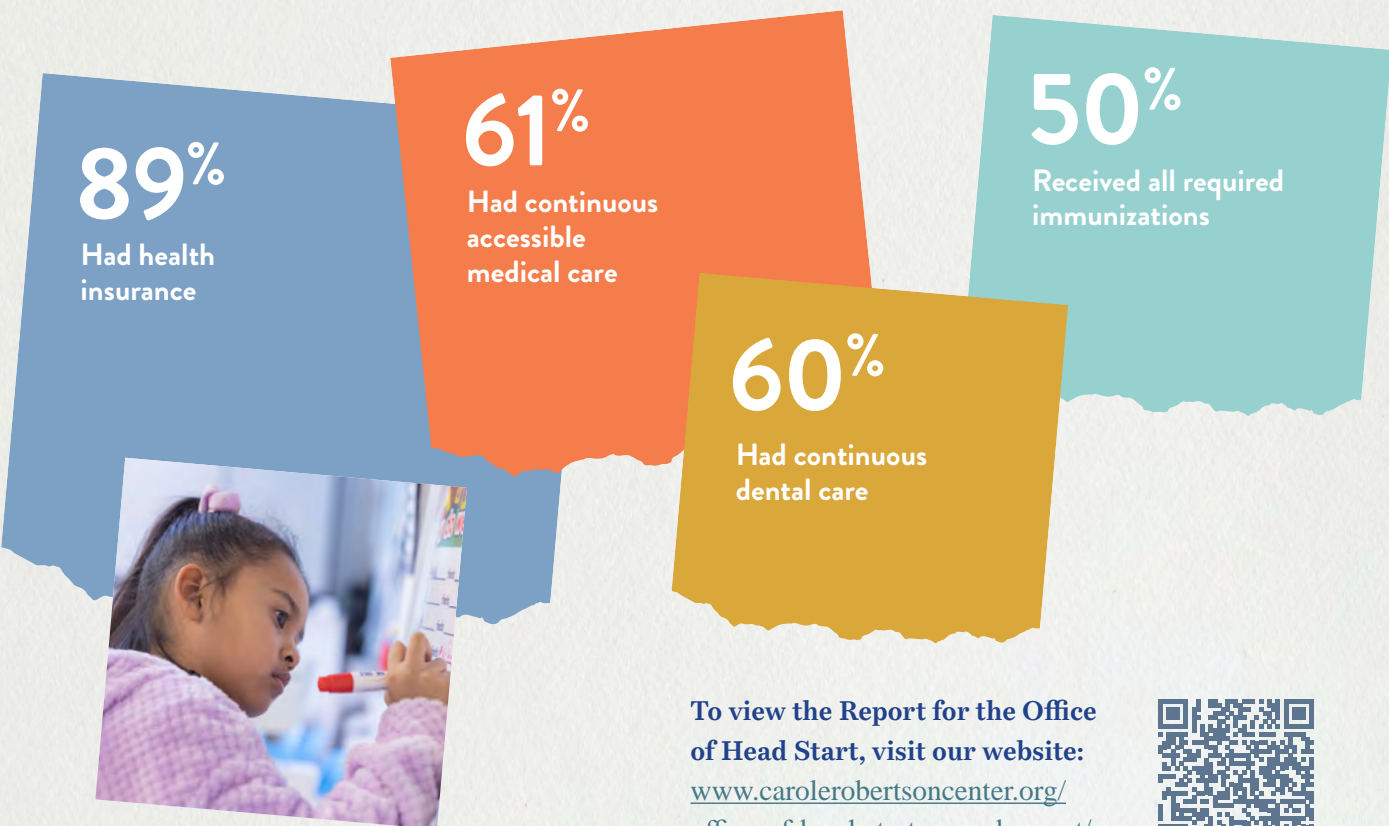


Note: The Carole Robertson Center collects and reports metrics indicating children's development according to "widely held expectations" as defined by Teaching Strategies Gold, the assessment tool used in conjunction with Creative Curriculum, a best-practices ECE curriculum used by Center educators.

Children Ages 0-3 in Our ECE Programs Who Access Various Types of Care



Children Ages 3-5 in Our ECE Programs Who Access Various Types of Care



To view the Report for the Office of Head Start, visit our website: www.carolerobertsoncenter.org/office-of-head-start-annual-report/



Carter Culver
Chair

Jessica Gaito
BRIDGEBIO
Vice Chair

John Blasi
ACCENTURE
Treasurer

Stefanie Kruse Curley
PARTS TOWN
Secretary

Scott Ahlman

Christine Brambila
ILLINOIS CHILDREN'S
HEALTHCARE FOUNDATION
Alumni Representative

Paul Foley
VISIBLY

Cornelia Grumman

Contessa Houston
Chair, Parent Policy Council
Parent Representative

Maribel Lopez
COOK COUNTY HEALTH
SYSTEMS
Alumni Parent Representative

Larry Mages

Kelsey Malnati Howell
MARC AND JEANNE MALNATI
FAMILY FOUNDATION

Kurt Mamon
KURT MAMON INSURANCE CO.,
STATE FARM

Dave Robertson

Karen Salmon
WINDY CITY INDIE

John Smith
ACH FOOD COMPANIES

Rya Smith
Vice Chair, Parent Policy Council
Parent Representative

Rani Williams
UI HEALTH

Jamellah Braddock Ellis
Honorary Robertson Family
Representative

Dianne Robertson Braddock
Honorary Robertson Family
Representative

Bela Moté
CAROLE ROBERTSON CENTER
FOR LEARNING
President & CEO, Ex-Officio



To view our Donor Honor Roll, visit our website: www.carolerobertsoncenter.org/donor-honor-roll/





CAROLE ROBERTSON CENTER
for Learning



OUR MISSION

To educate, enrich, and empower children and families.

OUR VISION

To help build a just and equitable society, the Carole Robertson Center for Learning, in partnership with families, will be a beacon of best practices, innovation, and impact in early childhood and youth development.

PURPOSE STATEMENT

We exist to ensure that every child and family can reach their full potential in school and life. Anchored by our commitment to closing the opportunity gap and creating a more just, inclusive, and equitable world for all children, we offer high-quality early education and youth development environments abundant in compassion, support, and empowerment.



FOR FAMILIES, BY FAMILIES, WITH FAMILIES

Carole Robertson Center for Learning pairs high-quality education and enrichment for children and youth with one-on-one support services to open opportunities for the whole family.

AN HONOR AND RESPONSIBILITY

Since its inception, the Center has worked to honor the life and memory of Carole Robertson who, together with her friends Addie Mae Collins, Cynthia Wesley, and Denise McNair, was killed in the 1963 bombing of the 16th Street Baptist Church in Birmingham, Alabama.



Carole Robertson Center for Learning
Administrative Offices
1111 South Western Avenue, Suite B
Chicago, IL 60612
(312) 243 7300

carolerobertsoncenter.org

